



Ski MEISTER

Alf Engen Ski Museum Foundation
Utah Olympic Park, Park City, Utah



PAGE 4

Vintage Skiwear
Fashion Show

PAGE 3

Honoring the
2002 Olympic
Volunteers

New Board
Member: Todd
Engen

PAGE 7

Meet the New
Hall of Fame
Inductees

PAGE 10

WINTER 2019-20

ALF ENGEN SKI MUSEUM



Board of Trustees

Tom Kelly
Chairman

David L. Vandehei
Chairman Emeritus

Alan K. Engen
Chairman Emeritus

Scott C. Ulbrich
Chairman Emeritus

Mike Korologos
Vice President

Barbara Yamada
Secretary

Michael R. Maughan
Treasurer

Connie Nelson
Executive Director

David Davenport
John Durham
Spencer P. Eccles
Dr. Todd Engen
James Gaddis
Herbert C. Livsey
Barbara McConvill
David Quinney
Nathan Rafferty
Ron Steele
Dr. Greg C. Thompson

Honorary Board Members

John Bower (deceased)
Spencer F. Eccles
Bill Lash
Gray F. Reynolds

CHAIRMAN'S LETTER



It's hard to believe it would have been Alf Engen's 110th birthday this year! Hello, everyone, and thank you so much for your support of our wonderful Alf Engen Ski Museum. We take a lot of pride in being one of the finest ski museums in the world, thanks to your ongoing dedication.

If you've been to the museum lately, you know that we have very high standards for our exhibits. Our upgraded Alf Engen and Stein Eriksen exhibits attracted much attention this past year as around a half million people came through our doors.

To enhance those standards, our Executive Director, Connie Nelson and Operations Manager, Jon Green, are actively engaged with StEPs (Standards and Excellence Program for History Organizations), now halfway through the two-year program. We were especially proud of Connie this year when she was recognized with the International Skiing History Association's Lifetime Achievement Award.

You may also have noticed a concerted effort to tell our story through social media, with daily Facebook, Instagram and Twitter posts, showcasing our wonderful archive of historical artifacts and interesting stories.

We appreciate your ongoing support through both your financial contributions, as well as simply encouraging friends to come visit the Alf Engen Ski Museum.

-Tom Kelly

FROM THE EXECUTIVE DIRECTOR

With the confirmed interest by the Utah Olympic Exploratory Committee to bid for the 2030 or 2034 Olympic Winter Games, showcasing our region's ski history is more important than ever. We are currently fundraising to undertake our biggest upgrade since opening in 2002 – a renovation that will encompass over half of the Alf Engen Ski Museum. This exciting project will further cement the Engen and the Eccles 2002 Olympic Winter Games Museums as the premier ski history repositories in the nation.

New and improved exhibits will include a topographic projection map featuring Utah ski resorts; snowboarding display; photo booth; avalanche safety exhibit; evolution of alpine, freestyle and cross-country skiing; a tribute to the storied 10th Mountain Division and an interactive multi-touch table. For more information and concept plans, please visit alfengen.design.

Another project, entitled "The History and Evolution of Snow Sports in the Intermountain Region," is scheduled for unveiling early this year, and will feature a myriad of state-of-the-art interactivity, designed to engage and educate visitors.

We invite you to become involved in these ambitious projects that serve to further showcase the impact of winter sports in the Intermountain Region. Your past support has helped build and shape the Alf Engen Ski Museum into a world-class facility enjoyed by over a half million visitors annually, including tens of thousands of Utah school children through our Education Field Trip program.

Your support is instrumental in creating new exhibits that will further entertain, inspire and educate young and old alike. Let us know if we can visit with you to discuss how you can help.



Connie Nelson sporting a 1990 Obermeyer ensemble at the 2019 ski wear fashion show.

-Connie Nelson

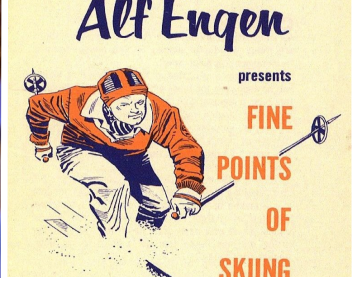
Ski MEISTER

A publication of the Alf Engen Ski Museum Foundation
Connie Nelson, Executive Director
cnelson@uolf.org

Alf Engen Ski Museum Foundation
3419 Olympic Parkway
PO Box 980187, Park City, Utah 84098
Phone (435) 658-4240 Fax (435) 658-4258

Inquiries, questions, or submissions of press releases and articles of interest for the Alf Engen Ski Museum Foundation newsletter are welcome.

Cover photo: Sarah Probert walks the runway at the 2019 Barbara Alley Simon Vintage Ski Wear Fashion Show.



NEW EXHIBITS AND EXCITING CHANGES AT THE MUSEUM

In the world of business it's often said, "If you're not growing, you're dying." In many ways, the same can be said for museums. Without new exhibits and offerings to attract, entertain and educate guests, a museum's collection can start to feel faded and worn. Fortunately, that will never be a concern at the Alf Engen Ski Museum as there's always something new to discover, year after year.

Thanks to many generous supporters, 2019 was particularly busy with the installation of a new 2002 Winter Olympic Games exhibit, an exciting upgrade to the popular Mountain Sport Simulator, a complete website redesign, and the unveiling of a cutting edge online virtual museum tour.

Team 2002 Volunteer Exhibit

In an effort to highlight the monumental contribution of the 2002 Winter Olympic volunteers, a special exhibit dedicated to the 26,000+ strong volunteer force - collectively known as Team 2002 - was installed this past fall. Located in the George S. and Dolores Doré Eccles 2002 Olympic Winter Games Museum on the second floor, the new exhibit features lifelike mannequins wearing the four different colored uniforms assigned to volunteers, with photos and descriptions on matching panels.



Mannequins dressed in Team 2002 uniforms in the new Olympic volunteer exhibit.

Website Redesign

If you haven't visited the Museum's website in a while, you'll be pleasantly surprised when you do. With help from web design company Lever Pulley, the site was updated this past summer with a sleek new look, easier navigation and active video backgrounds. New layouts and additional photos further enhance the user experience by making the website more engaging and user-friendly.



Screenshot of the new website homepage. Check it out at engenmuseum.org.

Powder Skiing Simulator

The Alf Engen Ski Museum's Mountain Sport Simulator provides guests an exciting opportunity to experience the thrill of four specific mountain sports: bobsled, downhill mountain biking, powder skiing and speed flying (para-gliding on skis). With an eye towards upgrading the powder skiing option, the Museum recently recruited local skier Ben White to capture new footage at Alta Ski Resort. The result is an exhilarating run in the famed Devil's Castle area on what turned out to be a perfect Utah bluebird powder day.



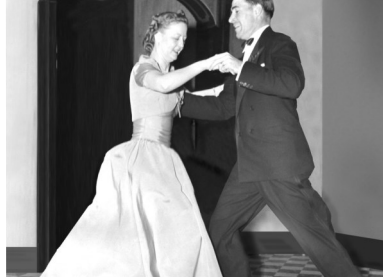
Devil's Castle at Alta Ski Area: Site of the new powder skiing simulator video.

3-D Virtual Museum Tour

One of the more exciting new elements on the website is a 3-D virtual tour of the Museum. With just a few mouse clicks, users can now explore the Museum from their desktop computers and mobile devices. It's never been easier or more convenient to discover exhibits, learn about ski history and watch short videos highlighting different aspects of the Museum's collection. And with the ability to constantly add new content, the virtual tour is poised to become an exciting ever-changing part of the website.



Screenshot from 3-D virtual tour. Small blue circles indicate exhibit information which can be "called out" with a simple mouse click.



VINTAGE SKI WEAR FASHION SHOW - 30 YEARS OF STYLE

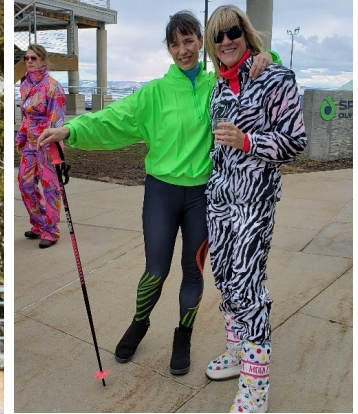
For over thirty years, Barbara Alley-Simon amassed an incredible inventory of ski outfits that are now part of the Museum's permanent collection. More than forty of those ensembles were on display last April at a live fashion show held in the Museum plaza. The event kicked off the International Skiing History Association's annual Ski History Week which was held in Park City for the second time in five years.

The show was a huge success, thanks to the help of two dozen eager volunteer models who delighted the crowd of more than 100 ski history enthusiasts and Museum supporters.

In a fitting tribute at the end of the fashion show, Genia Fuller - representing the United States Ski & Snowboard Hall of Fame - presented to Barbara the very first Women in Industry Award. The award provides recognition to outstanding women whose lifetime contributions have shaped snowsports in the United States.



Outfit: 1984 Head / Model: Ken Barfield



Liz Veneskey and Connie Nelson



Outfit: 1990 Obermeyer / Model: Connie Nelson



Outfit: 1979 Colmar
Model: John Lippert



Outfit: 1988 Nils / Model: Tomoko Schlag



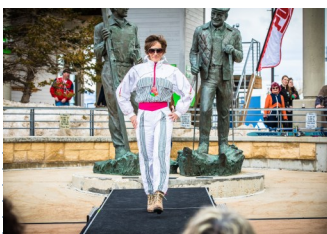
Sam Hacker in a 1975 Bogner jacket



Outfit: 1986 White Stag / Model: Andy Davis



Models-in-waiting



Outfit: 1989 Anoralp
Model: Sarah Probert



Models: Andy Davis,
Sara Werbelow, Ken Barfield



Outfit: 1989 Roffe / Model: Sam Hacker

Photos by Claire Wiley/Eclectic Brew Productions



WHERE DID THE NAME SKI MEISTER ORIGINATE?

by Alan K. Engen

Since the second issue of the Alf Engen Ski Museum Foundation newsletter, published in 1998, the name “Ski Meister” has been the newsletter’s identifying namesake. Why that moniker?

“Ski Meister” is of German origin signifying “master skier.” Starting in the late 1930s, many of the U.S. National Skiing Championships highlighted the top ski athletes who competed in four events, downhill, slalom, jumping and cross-country. The Four-Way winner was referred to as “Ski Meister,” having demonstrated the best overall combined performance in those events. This title was considered to be the most prestigious by the nation’s top ski competitors and officials.

Olympic skier Dick Durrance won the first officially recognized Four-Way national skiing title in 1939. For both 1940 and 1941, this title belonged to Norwegian-born Alf Engen who, through his competitive years, won 16 national alpine and nordic championship events, plus captured both the Canadian and North American ski jumping titles in 1937.

Because of Alf’s legendary achievements as a skiing pioneer, covering a span of six decades, he was unanimously named skiing’s “Athlete Of The Century” in 1950 by the Deseret News, and was selected by the Salt Lake Tribune as “Utah’s Overall Athlete of the 20th Century” in 1999. This, by all standards, qualifies him as the “Ski Meister” of his generation in the Intermountain Region. Thus, it was decided that the Alf Engen Ski Museum Foundation newsletter should carry the designation which highlights the Museum namesake’s legendary accomplishments.

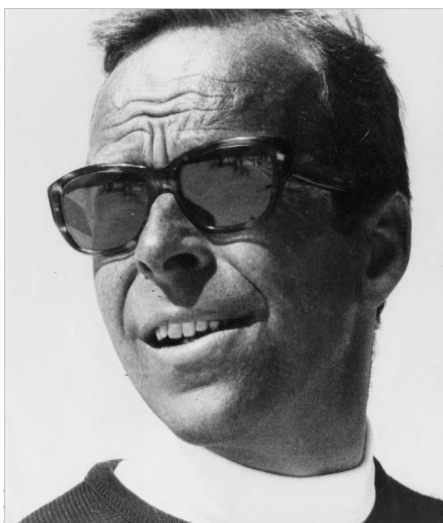


Above: The original Ski Meister, Dick Durrance, competes at the Olympic Tryouts on Mr. Rainier in 1935. Photo from the Durrance Collection.

Right: Alf Engen, the Ski Meister of his generation. Photo courtesy of the J. Willard Marriott Library Ski Archives.



IN MEMORIAM: WOODY ANDERSON June 7, 1932 - October 6, 2019



On November 3rd, 2019, family and friends of the late Woody Anderson gathered in the Museum’s Quinney Conference Room to say goodbye at a private memorial. Hugs, tears and laughs were shared by all as relatives, colleagues and ski buddies told stories of Woody...

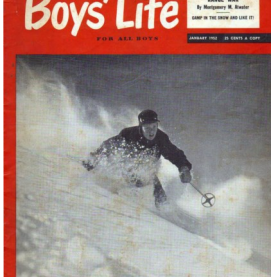
Like the time when Woody was General Manager at Park City Resort and he’d had enough of his staff ducking a rope to ski down one particular bowl - which at that time was off limits and out of bounds. He supposedly exclaimed, “The next person who skis down that bowl is gonna get a blue slip!” (In this case, a blue slip was an employee’s notice of termination.) Years later, that forbidden area would officially open with the name “Blue Slip Bowl.”

Born and raised in Salt Lake City, Woody Anderson was a ski racer, ski instructor, ski school director, ski area manager, ski shop owner and resort owner/operator. He was inducted into the Professional Ski Instructors of America Hall of Fame in 2004, and into the Intermountain Ski Hall of Fame in 2007.

His spirit lives on in the halls of the Museum, on the slopes of many ski areas throughout the Intermountain Region and in our hearts. Rest in peace, Woody.



Woody’s November 3rd memorial at the Alf Engen Ski Museum. Photo courtesy of the Museum.



FIELD TRIP ATTENDEES MEET PARALYMPIC MEDALIST



Friday, November 8 was an exciting day for more than 70 fourth grade students from Riverview Elementary in Spanish Fork, Utah, as they were treated to a special visit from two-time Paralympic medalist, and bona fide Hometown Hero, Keith Gabel. A native of Ogden, Keith is the only man in history to win back-to-back Paralympic medals in boardercross, (Bronze at 2014 Sochi Games and Silver at 2018 PyeongChang Games).

"Thank you for having Keith in the Museum while we were there! We really enjoyed our visit and Keith's story was a great message for our students."

Mary Hollister, Riverview Elementary

Keith Gabel won a bronze medal at the 2014 Games and a silver at the 2018 Games, making him the only man in history to medal twice in Paralympic snowboard competition.

Keith's visit to the Museum was prompted by a need to trade out the custom-made snowboard in his Hometown Heroes display case, and true to his heroic nature, he agreed to make time to speak to the school group, share his story, and even allow the students to hold his medals. Needless to say, students were enraptured as Keith spoke of his determination to not only continue snowboarding after an accident which claimed the lower part of his left leg, but also to reach the highest level of his sport. During a field trip which is designed to educate and inspire school children, Keith's visit could not have been more fitting.

THANK YOU FIELD TRIP DOCENTS!

- | | |
|--|---|
| Sue Bhanos (3yrs) | Marilyn Jameson (8yrs) |
| Eric Bloomquist (New) | Carole Levine (New) |
| Bonnie Bower (3yrs) | Rusty Martin (6yrs) |
| Judy Brophy (10yrs) | Ray Miamidian (17yrs) |
| Joyce Cossin (11yrs) | Ann Miller (10yrs) |
| Sue & David DeMartini (New) | Liz Moore (New) |
| Melanie Dutcher (11yrs) | Janis Pierce (6yrs) |
| Barbara Engen (18yrs) | Fred Rubinfeld (12yrs) |
| Ute Fowler (18yrs) | Dan Steffen (9yrs) |
| Marit Glenne (7yrs) | Jim Tedford (5yrs) |
| Karen Halverson (5yrs) | David & Susan Vandehei (18yrs) |
| Jim Harger (New) | Kammie Ward (3yrs) |

(Years of docent service)

THANK YOU!



Thank you notes and original artwork sent in from school children who attended the Museum's educational field trip program.



TODD ENGEN JOINS THE BOARD OF DIRECTORS



Todd Engen at Alta Ski Area in 2015.

Todd B. Engen, M.D. has recently joined the Alf Engen Museum Foundation board of directors. He is a grandson of the museum's namesake, Alf Engen, and elder son of Alan and Barbara Engen.

Todd is recognized throughout the country as one of Utah's leading authorities on Oculofacial plastic surgery and has presented his specialized surgical work at educational symposiums and medical lectures. He was selected as one of Utah County's "Top Doctors" in 2018.

An avid skier, Todd taught skiing at Alta in his grandfather's ski school before entering medical school at the University of Utah. He continues to ski every chance he gets to test the terrain in the high peaks of the Intermountain Region as well as Canada and Alaska.

The Alf Engen Ski Museum Foundation feels very fortunate to have Todd join its board of directors and continue the Engen skiing legacy of his parents and grandparents.

MUSEUM STAFF AND DOCENTS... WE COULDN'T DO IT WITHOUT YOU



Every year, the museum staff, docents and their spouses come together for an appreciation party.

Photo at left is from the July 2019 gathering at the Museum.

Front row, left to right: Marit Glenne, Sharon Bresin, Judy Brophy, Vance Miller, Ann Miller, Connie Nelson.

Middle row, left to right: Liz Moore, Tommy Bresin, Barbara Engen, Sue Bhanos, Dan Brophy, Marilyn Jameson, Carole Levine, Sue DeMartini, David DeMartini, Sally Martin, Liz Weller.

Back row, left to right: Jim Tedford, David Vandehei, Alan Engen, Susan Vandehei, Paula Larson, Lee Larson, Jay Zorzy, Karen Halverson, Mel Dutcher, John Dutcher, Jim Harger, Rusty Martin, Jon Green.

Thank you to all our employees and docents who help keep our Museum guests entertained, our exhibits clean and our spirits lifted. Your enthusiasm and dedication to the Museum and its mission make coming to work a pleasure. We appreciate all you do and we're looking forward to a fun new year together.

Yours in skiing,
Connie and Jon

MUSEUM STAFF SPOTLIGHT

PAULA LARSON
Hometown
St. Paul, MN

Favorite Exhibit
Wasatch
Topo Map



BOBBIE SPOHN
Hometown
Moorestown, NJ

Favorite Exhibit
2002 Olympic
Highlights Video





SKI ARCHIVES HONORS WASATCH MOUNTAIN CLUB, ALAN K. ENGEN AND RAELENE DAVIS

On Tuesday, November 5, 2019, the University of Utah J. Willard Marriott Library Ski Archives presented three awards at its annual Ski Affair.

The 2019 **History-Maker Award** was presented to Wasatch Mountain Club, the 100-year-old organization which started as an informal group of 13 hikers and has grown to more than 1,000 members. It remains one of the oldest clubs of its kind, with a mission to promote physical and spiritual well being through outdoor activity.

The **S.J. Quinney Award**, named in honor of “the father of Utah’s ski industry,” Joe Quinney, was bestowed upon Alan K. Engen, older son of skiing legend, Alf Engen. Alan’s contributions to ski history include the Alf Engen Ski Museum, two books: *For the Love of Skiing...A Visual History* and *First Tracks...A Century of Skiing in Utah*, (which he co-authored with Dr. Gregory C. Thompson), and volumes of documents, files and photographs donated to the Marriott Library’s Ski Archives.

The **Sue Raemer Memorial Award**, named in memory of the late Ski Archives co-founder, was presented to Raelene Davis. Raelene is vice president for marketing at Ski Utah and remains one of the Ski Affair’s most ardent volunteer supporters. Thanks to her drive, commitment and influence, the annual fundraising event has grown to new heights year after year.



Dr. Greg Thompson, right, co-founder of the Ski Archives, presented the major awards during the 2019 Ski Affair. Honorees were, from left, Alex Kelner, a 61-year member of the Wasatch Mountain Club; Alan K. Engen, historian, author, and founder of the Alf Engen Ski Museum; and Julie Kilgore, president of the Wasatch Mountain Club. Photo courtesy of the J. Willard Marriott Library Ski Archives.

WISHING OUR RESORT PARTNERS A SNOWY AND FUN WINTER SEASON!



COMING SOON TO A SKI HISTORY MUSEUM NEAR YOU...

How did we go from ski jumping at Ecker Hill in the 1930s to mountain biking at Deer Valley in the 2000s? That question - and many others pertaining to the evolution of mountain recreation - will soon be answered by a state-of-the-art interactive exhibit scheduled for installation at the Museum in early 2020.

The idea for an exhibit which tells the story of mountain recreation through the ages stemmed from a desire to connect the history of two parts of the Museum: The Ecker Hill alcove and the Mountain Sport Simulator corner.

Once complete, guests will command a touchscreen timeline display with photos and information marking significant moments in the history of winter *and summer* mountain recreation. Starting in the 1800s with skiing as a form of transportation, through the early-mid 20th century as mountain recreation surged, and into the 2000s with the Salt Lake Winter Olympics, this exhibit will help guests visualize the bigger picture of mountain recreation’s ongoing evolution.



Preliminary rendering of the new exhibit space. Courtesy of Unrivaled.



ENGEN MUSEUM BOARD MEMBERS GARNER HISTORY, SNOWSPORT BUILDER AWARDS

by Mike Korologos

Two founding board members of the Alf Engen Ski Museum Foundation were honored by their peers recently in recognition of their outstanding service to history and to skiing. Honored were Dr. Greg Thompson and Barbara Yamada.



Dr. Gregory Thompson

Dr. Thompson, Director of Special Collections and an adjunct professor and university archivist at the University of Utah, became a Fellow of the Utah State Historical Society last fall during the annual conference of the state's leading historians. He was honored for his "outstanding contributions to Utah history" and for his "expertise, energy and overall knowledge of Utah history." He became only the 40th Fellow in the 122-year history of the society.

Dr. Thompson co-founded the Utah Ski Archives in 1989. Housed at the University of Utah, the Archives is the largest repository of skiing history in the country. He helped the Engen Museum forge a unique relationship with the J. Willard Marriott University Library which finds the Museum serving as an "extension" of the archives by showcasing three-dimensional materials of historic significance while the Library stores items suitable for filing and easy access to researchers.

Dr. Thompson co-authored, with Alan Engen, the ski book *First Tracks*, published in 2001, and was inducted into the Intermountain Ski Hall of Fame in 2014. In 2004 he received the Lifetime Achievement Award from the International Skiing History Association.

Barbara Yamada, the long-time chair of the University of Utah J Willard Marriott Library's popular fund-raising gala, the Ski Affair, and Museum board member since its founding in 2002, was honored by the Far West Ski Association. She received the group's coveted 2019 Snowsport Builder Award for "Continuing to make history in Intermountain skiing."

Her citation reads: "Barbara Yamada has served snowsports as a volunteer, administrator, junior racer, racing official at all levels and coach and instructor for a span of five decades. She is the go-to person for skiing in Utah."

Her volunteer work includes being a major supporter of the University of Utah Ski Teams, being a volunteer during the Olympic/Paralympic Winter Games of 2002 and being executive director of the Intermountain Division of the USSA in 1973.

She was inducted into the Intermountain Ski Hall of Fame in 2018.

With affiliates in 12 western states and comprised of 150 ski clubs with a combined membership of 50,000 skiers and snowboarders, the FWSA is one of the largest groups of snowsports enthusiasts in the U.S. It is headquartered in Cheyenne, WY. and calls itself "The Voice of the Western Skier."



Barbara Yamada

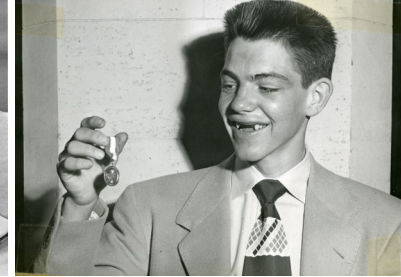


UTES WIN 12th NCAA CHAMPIONSHIP

Last spring, after four days of racing in Stowe, Vermont, the University of Utah Ski Team reigned victorious, securing the NCAA Championship. The win was the team's 12th NCAA title and its second in three years. Congratulations to all the athletes, coaches and support staff who helped bring home the Championship!

The team's sights are now set on the 2019-20 Championship scheduled March 11-14, 2020 in Bozeman, Montana. Go Utes!

HALL OF FAME



INTERMOUNTAIN SKI HALL OF FAME - Class of 2019

September 25, 2019 - Three new members were inducted into the Hall of Fame, located at the Alf Engen Ski Museum.



CRAIG BADAMI (1952 - 1989)

As part owner and marketing VP at Park City Resort, Badami upended the status quo of the European racing establishment by staging the first alpine World Cup race in Utah in 1985, a spectacle enjoyed by 12,000 high-spirited spectators.

F.I.S. (International Ski Federation) officials took notice and, for the next four years, Park City started the season's World Cup circuit

with competitions labeled "America's Opening."

This put the world on notice that Utah was capable of staging international winter competitions, a critical component of a bid to host the 2002 Olympics.

After staging the 1989 America's Opening, Badami was killed in a helicopter accident near the base of Park City Ski Area. Soon thereafter, the resort brought to life one of his visions: A permanent ski racing complex whose main run was named "C.B.'s" in his honor.

While his initials are on a mountainside, the footprint of Craig Badami is prominently encased in Utah's Olympic legacy, which he helped forge.



DARRELL ROBISON (1931 - 2002)

Darrell 'Pinky' Robison moved from Peoria, Illinois to Salt Lake City at age 12 and quickly fell in love with skiing.

Less than a decade later he won the Harriman Cup at Sun Valley in 1951, the Snow Cup at Alta in 1953 and the slalom in the Pan American Games in Bariloche, Argentina in 1954. The pinnacle of his career came in 1952 when the U.S. Olympian finished 22nd in the Oslo Games.

While his racing triumphs are numerous, it was a downhill race in 1951 that will forever underscore his legacy...

While at the start gate, the U of U sophomore felt a button on his pants give way. Unable to delay the start, he took off and ended up crossing the finish line with red long johns totally exposed. Undaunted, Robison placed 7th - and then won the slalom the next day to qualify for the U.S. Olympic Team.

A protégé and close friend of Jack "Red Dog" Reddish, Darrell was anointed "Pink Dog" to showcase his place among the elite skiers of the era. Hence the nickname "Pinky."

2019 Crystal Award Winner

The Crystal Award honors long-time supporters of the Alf Engen Ski Museum who have contributed personally to its success.

Spencer F. Eccles' vision, leadership and generosity have played a vital part in ensuring the successful legacy of the Utah Olympic Park, including the creation of the Museum, the Joe Quinney Winter Sports Center, the George S. and Dolores Doré Eccles 2002 Olympic Winter Games Museum, the Spence Eccles Olympic Freestyle Pool, and the Utah Olympic Legacy Foundation.

Spence's induction into the Intermountain Ski Hall of Fame in 2014 recognized his success as an All-American, top amateur ski racer in the 1950s. His continued role as an influential advocate of winter sports fosters the use of venues for citizens and visitors alike, ensuring a vibrant future for our world-class Olympic facilities.

**Congratulations Spence!
Thank you for your ongoing support and dedication to the Alf Engen Ski Museum.**



Spence Eccles and Alan Engen at the 2019 Intermountain Ski Hall of Fame Induction Ceremony.



ERIK SCHLOPY (1972 -)

For 22 years Erik Schlopy amassed one of the longest and most successful careers in U.S. ski racing history.

Two-time Olympic junior champion; three-time U.S. Olympian; seven-time national champion; World Pro Super G champion; Bronze medalist in World Championships; named to six F.I.S. World Championship teams and competed as a professional ski

racer an incredible 18 years.

Schlopy is the only ski racer in history to successfully go from World Cup skiing to the Pro Tour and back to World Cup ski racing.

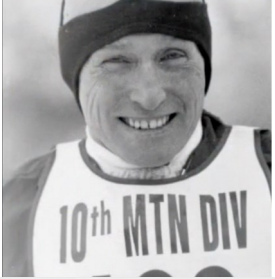
The extraordinary skiing dominance of the Buffalo, NY native helped shift United States ski racing paradigms.

He paid the price: a broken back (1993), four knee surgeries and a host of other injuries. But, he always came back . . . and won.

A father of two and resident of Park City, Erik is passing on his unbending winner mentality to his disciples on many fronts, including his "Schlopy Repetition Drill", popular among racing clubs throughout the country.

Erik Schlopy - the penultimate world-class ski racing champion.

For Hall of Fame nomination info, contact Ski Archives at (801) 581-3421



ALF ENGEN SKI MUSEUM MEMBERS

Thank you for your support!

2019

CORPORATE MEMBERS

\$5000+

Quinney, David & Shari

SUSTAINING MEMBERS

\$1000 - \$4999

Burton, Norman F. & Joanne C.

The Byrne Family

Dark, Bill & Robin

Deer Valley Resort

Durham, John & Shirley

Eccles, Spencer P. & Kristine

Engen, Alan K. & Barbara •

Extell Development Company

Gaddis, Jim & Barbara

Imboden, Adolph

Kallerud, Thor & Barbie

Wasatch Global Company Match

Korologos, Mike

Seaman, Karen & Jon

In honor of Connie Nelson & Jon Green

Simon, Barbara Alley

Vandehel, David & Susan •

Wasatch Global

Webber, Richard & Judy •

ENRICHING MEMBERS

\$500 - \$999

Anderson, Sandy

In loving memory of Woody Anderson

Beaver Mountain Ski Area

Cumming, John & Kristi

DeSeelhorst, Gary

Dreyfous, Jim

Ferries, Chuck & Nancy

Fuegi, Hans & Sally

Korologos, Tom C. & Ann

Raemer, John & Jean •

Shane, Elfriede •

Steele, Ron & Julie

SUPPORTING MEMBERS

\$250 - \$499

Archer, Clay & Lucy

In memory of Dick Mitchell

Bennion, Kitty

Bresin, Sharon

Chambers Trust, Robert J.

In memory of Robert (Bob) Chambers

DeBry, Wendy & Taylor

In honor of John Durham

Dickson, Brad & Janet

Dudley, Richard & Susan Glasmann

Giddings, Janet & Peter **ISHF**

In memory and honor of Craig Badami

Gwin, Larry and Vicki

Johnson, Ramon

Korfanta, Karen A.

Krug, Scott

Ligety, William C. & Cyndi Sharp

Loughlin, Bill & Julia •

Martin, J. Michael

Melville, Marvin A. & Renee B.

Miller, Ken & Ann

Miller, Tim & Karen **ISHF**

In memory of Craig Badami

Nelson, Connie

Olch, Bradley

Pickett, Nancy

Reed, Sydney

Thomas, Matt & Kelly

Thomas, Richard & Susan

Thornton, Scott & Betsy

Ward, David & Kammie

Weaver, Peter and Susan

CONTRIBUTING MEMBERS

\$100 - \$249

Abel, Louis

Actor, David & Lisa

Anderson, Graham S.

Archer, Frank & Robyn

Archibald, Mark

Amer, Dick & Diane

Baer Family

In memory of Woody Anderson

Banks, Ben

Bass, Jim

Bounous, Junior & Maxine

Bower, Bonnie

Breeze, Nick & Gail

Brett, Walt & Jennie

Brown, Laurie & Mike

Carter-Wells, JoAnn, Ph.D. •

In memory of Donald G. Wells

Chamberlain, Bob & Mary

Cobabe, Aleta & Marc Paulsen

Daley, Darcey, Loretta Archer, Sally

Castellanos, Pam Hyde & Susan

Paterson

In memory of Woody Anderson

Danforth, Judith & Murray

Dark, Bill & Robin

Dean, Peggy

DesLauriers, Kit & Rob

Devaney, Bob & Betsey

Eastwood, Tom & Laurie

Emerson, Bruce & Kathy

Engen, Alan & Barbara •

In memory of Woody Anderson

Fowler, Mark & Pem •

In memory of John Bower

Frost, Dick

Garnas, Don & Cathy

In memory of Woody Anderson

Gee, John & Rosie

Glicksman, Marge **ISHF**

In memory of Craig Badami

Glidden, Jock C.

Grass, Ray & Carol

Hall, Donald

Harvey, Kevin, Leslie, Kris & Nick

In memory of Woody Anderson

Jennings, Jim & Shelle

Jensen, Hal & Katrina

Jones, Phil & Pam **ISHF**

Lash, Bill •

In memory of Woody Anderson

Lauritzen (Seeholzer), Nancy S.

In memory of Harold Seeholzer

Lupus, Carol

In memory of Stormy Lupus

Marsh, Stewart & Barbara

Marshall, George & Connie •

Martin, Rusty & Sally •

McClenahan, Debbie

McCullough, William & Suzelle

McIntosh, Stephen & Janet Grant

Meldrum, Daniel & Patricia

Miller, Jim & Pam Mills

In memory of Pat Miller

Mosser, Janet •

National Ski Areas Association

Niederhauser & Davis

O'Connell, John & Joanne

Peters, Dean & Jamie

In memory of Jack & Peg Kurlander

Pettise, Steve & Arlene

Redman, Rich & Connie

In memory of Woody Anderson

Scott, Bill & Martha

Shaffer, Richard & Kay

In honor of Alan & Barbara Engen

Shaw, Tiger & Kristin

Spedden, David

Spedden, Rick & Janet

Stratton, John M. & Linda Bonar

Tackman, Gary & Teresa

Taylor, Dick & Marilyn

Tedford, Laila & Jim

Theobald, Bob & Else

Thompson, Dr. Greg & Karen •

Thurgood, David G. •

VanWinkle, Louise & Davis

In memory of John Bower

Veterans Ski Instructors Alliance

In memory of Woody Anderson

Weatherbee, Nona

Weichsel, Bernie

Weller, Liz

West, Tom

In honor of Connie Nelson

Wilson, David & Sharon

Yamada, Barbara

IBM Match

INDIVIDUAL MEMBERS

\$25 - \$49

Aten, Elissa

Barfield, Ken

Bloom, Marsha

Dickey, Eli

Elliott, Torch & Sally

Feddersen, Kris "Fuzz"

Fox, Charlie

Hayes, Julie

In memory of Woody Anderson

Hill, Duane

Jenson, Velma

In memory of Sidney L. Jenson

Larson, Paula & Lee

Levine, Carole & Barry

Luers, Mike

Miller, Dale E.

Nelson, Lyle & Marcia Witte

Peek, Lynn Ware

Pesman, Nancy

Professional Ski Instructors of America

In memory of Woody Anderson

Quinn, Charles H.

Scott, Eldon •

Seraphin, Nancy

Sine, Wesley

Smart, Heidi & Tom

Stone, Richard

MUSEUM FRIENDS

\$5 - \$24

AbuHaidar, Cate

Horwitz, Judy & Don

Miller, Meaghan

Nelson, Mary Lu

Novelle, Donnie

O'Malley, Michael

Schiffman, Reed & Dixie

Schlag, Tomoko

Terzian, Karen

Valiant, Lisa

White, Ruth

Wiley, Claire

UNRESTRICTED CONTRIBUTIONS

The Richard E. & Nancy P. Marriott Foundation

Janet Q. Lawson Foundation •

Joanne L. Shrontz Family Foundation

S. J. and Jessie E. Quinney Foundation •

Spencer F. & Cleone P. Eccles Family Foundation

RESTRICTED GRANTS

John & Shirley Durham

Alan & Barbara Engen •

Marriner S. Eccles Foundation

Park City Foundation

Park City Sunrise Rotary

Sorenson Legacy Foundation

Summit County RAP & Restaurant Grants

Utah Division of Arts & Museums

Utah Humanities Council

Vail Resorts EpicPromise

HALL OF FAME TABLE SPONSORS

George S. & Dolores Doré Eccles Foundation

Park City Chamber Bureau

Park City Mountain

Team Schlopy

U.S. Ski & Snowboard

Utah Olympic Legacy Foundation

• Donated more than once during 2019

ISHF Intermountain Ski Hall of Fame donation

Membership
Pledge Envelope Enclosed
Explore donor levels and benefits at
engenmuseum.org

MASTHEAD PHOTO INFORMATION

PAGE 1

- Steve & Don Hancey - Beaver Mountain's original "Levi Brothers" - standing at the original Harry's Dream Lift.
- John Aalberg (ISHOF Class of 2014).
- Alf Engen (ISHOF Class of 2002) in his Vikings soccer uniform, circa 1930s.
- Karen Budge-Eaton (ISHOF Class of 2012), in her official US Ski Team photo.

PAGE 2

- Junior Bounous (ISHOF class of 2002), at Alta's gelande event, circa 1980s.
- The 2002 Olympic gold medal British women's curling team led by skip, Rhona Martin.
- A young Alan Engen (ISHOF Class of 2009) at Alta Ski Area, circa 1940s.

PAGE 3

- Alisa Camplin - 2002 Olympic gold medalist in aerials.
- Alf Engen's Fine Points of Skiing Booklet - given to participants in the Deseret News Ski School, circa 1940s-50s.
- Canadian coach Justin Wadsworth helps Russian athlete Anton Gafarov during a race at the 2014 Sochi Olympics.

PAGE 4

- Argentinian Rotary Friendship Exchange at the Museum.
- George S. and Dolores Dore Eccles.
- Bon Jovi at the 2002 Olympic Closing Ceremonies.

PAGE 5

- Avalanche hunter and snow safety pioneer Monty Atwater.
- Spectators at Park City Ski Area's America's Opening World Cup races, circa 1980s.
- Alf Engen and his mother, Martha Engen, circa 1930s.

PAGE 6

- Alan Engen on the cover of a 1952 *Boys' Life* magazine.
- Earl Miller (ISHOF Class of 2005), and sons, Dale and Ray at Snowbasin, circa 1960.
- Drawing of the famous Imjarvi Encounter where two Finnish skiers experienced an alien visitation, circa 1970s.

PAGE 7

- 1960s Henke plastic coated leather boot.
- Bill Levitt, (ISHOF Class of 2011).
- Coveted "Jello Bowl" pin from the 2002 Games.

PAGE 8

- Alan Engen attempting a ski jump on his hands as father, Alf Engen, stands watch - Mt. Baldy, CA, 1959.
- Mannequins dressed and ready for display in the Museum's new Team 2002 Volunteer exhibit.
- Keith Lange (ISHOF Class of 2005), skiing at Alta.

PAGE 9

- K Smith (ISHOF Class of 2007), at Brighton.
- Neil Rafferty (ISHOF Class of 2005), at Snow King Ski Area, circa 1940s.
- Alan Engen at the 1989 Alta Gelande event.

PAGE 10

- Erik Schlopy (ISHOF Class of 2019).
- Craig Badami (ISHOF Class of 2019).
- Darrell Robison (ISHOF Class of 2019).

PAGE 11

- Legendary alpine skier, Janica Kostelic, who won a record three Olympic Gold Medals at the 2002 Games.
- Dev Jennings (ISHOF Class of 2006).

Contact Us

Give us a call for more information - or just to chat about skiing.

Connie Nelson
Executive Director
(435) 658-4240
cnelson@uolf.org

Alf Engen Ski Museum Foundation
PO Box 980187
Park City, UT 84098

Open daily 9am to 6pm

Visit us on the web at
engenmuseum.org

Find us on Instagram, Facebook
and Twitter for fun and informative
ski history photos and stories.



The Alf Engen Ski Museum Foundation



Alf Engen Ski Museum Foundation

PO Box 980187

Park City, UT 84098

PLACE
STAMP
HERE



*"Mark your calendar for the
2020 Intermountain Ski Hall of Fame
Induction Ceremony!"
Thursday, September 24th, 2020*