



# SkiMEISTER

Alf Engen Ski Museum Foundation  
Utah Olympic Park, Park City, Utah



**New Exhibits Coming**  
A New High in Excitement

PAGE 2



**Sochi Bound**  
Women's Ski Jumping - Mobil Exhibits Unveiled

PAGE 3



**S. J. 'Joe' Quinney**  
A Legacy of Vision and Generosity

PAGE 5

FALL 2013

Preserving the rich history of snow sports in the Intermountain West.

engenmuseum.org



# ALF ENGEN SKI MUSEUM

## INTERACTIVE SKI EXHIBIT WILL HAVE VISITORS SOARING

Thanks to seed money from the Adobe Foundation, these JDH Group concept plans will be a reality October, 2013. The new exhibits will be the talk of the museum world featuring twenty-first century technology that gives the guest a real-life experience while learning about snowsport history in the Intermountain West. Come by and have a look...and a ride!



Interactive ski jumping exhibit.



The view from the quad chair.



## SOCHI BOUND

### Women's Ski Jumping – Mobile Exhibits Unveiled - June 19, 2013

To celebrate the debut of Women's Ski Jumping in the sport's first Olympic Winter Games, the Alf Engen Ski Museum is featuring four mobile exhibits of uniforms and memorabilia of premier USA women jumpers. Located in the entrance of the museum, this exciting exhibit was unveiled on June 19, by Tom Kelly, Board Member. DeeDee Corradini, President of Women's Ski Jumping USA represented the organization and Whitney Childers introduced the four team members – Lindsey Van, Jessica Jerome, Alissa Johnson, Abby Hughes and Sarah Hendrickson.

The 2014 Olympic Winter Games will be held in Sochi, Russia, with our USA Women expected to make a strong showing.



L-R: Sarah Hendrickson, Alissa Johnson, Lindsey Van, Abby Hughes, Jessica Jerome.



Photo courtesy of Sarah Brunson / U.S. Ski Team

Sarah Hendrickson is hoisted into the air by her teammates after she won the 2013 FIS Nordic World Ski Championships

## BEHIND THE GOLD July 24, 2013

*Tom Kelly, Vice President, Communications, USSA - Museum Board Member*



If there was one thing evident in the six young women speaking to the Rotary Club of Park City in July, it was passion – true love for ski jumping and what they had accomplished as a team bringing their sport to the Olympics. On February

11, 2014, four American women will jump on the world's largest stage in Sochi with roots firmly embedded in the legacy of the 2002 Olympic Winter Games in Utah.

Eleven years ago they were just kids formulating a dream. Today, they've grown into adults who have made those dreams a reality, winning two of their sport's first three World Championships and establishing themselves as the best in the world. And they will be vying for those precious spots on the Sochi team.

"What motivates me is love and passion for the sport," said Abby Hughes. "That and getting over my fear of heights," she said laughing. "We're a family. I support these girls and they support me. And the support we get from the community makes me feel like I want to be Best in the World."

Long before the 2002 Games came to town, sport officials pushed for long term use of facilities and the development of local clubs to give Utah youth an opportunity to dream. Park City has watched

proudly as Lindsey Van and Sarah Hendrickson have brought home titles. Community pride still resonates.

"Growing up jumping, there were very few of us and we mostly trained with the men," said Alissa Johnson, who has watched her younger brother compete in two Olympics. "What changed for all of us in our careers is having a team that trained together and lived together and that's made us the Best in the World."

Today, the women are in the mix every day, training side by side with Olympic champions at the USSA Center of Excellence or soaring off the jumps at the Utah Olympic Park. What motivates them to hurtle through space off towering jumps? "We started when we were young before we knew better," joked Jessica Jerome.

"What I love about it is flying through the air," said World Champion Sarah Hendrickson. "There's nothing else in the entire world like it and not many people who can say they do it. The feeling is indescribable. When you're on the ski jump, nothing else in the world matters."

"It's hard and it's frustrating at times. But I like the challenge of the sport," added the sport's first World Champion, Lindsey Van. "When you have that one jump in a hundred it makes it all worth it. It has taught me a lot."

"You start out on alpine skis until you feel totally

comfortable and just work your way up," said Nina Lussi, who grew up on the Olympic hills in Lake Placid. "I was 10 years old, it was the last day of the season and my coach had asked me the night before if I wanted to ski with the big boys. I was a little scared so I went to my sister, who was a ski jumper. I asked her if she thought it was a good idea. She said, 'No, Nina, you're not ready.' Of course, that's the moment I decided to do it. As soon as I landed I threw my arms in the air – I had jumped off an Olympic hill!"

"You can take a hundred jumps and they can all be really bad. And you get to a point where you're frustrated, things aren't going the way you want them to go, you have to change your technique, dial things back and try new things. But as soon as you get it, that one jump just completely it just erases all those 100, 200 past jumps that were awful. That one jump keeps me going."

At the end of the meeting, Rotary President Joe Rametta offered a small token of appreciation, but one that will likely be prophetic. As a thank you for their appearance, Rotary donated a book to the local library: *Ladies First: Women Athletes Who Made a Difference*.

For a group of pioneers who had the courage to be first in their sport, the women's ski jumpers have already made a difference.



# ALF ENGEN SKI MUSEUM

## NICK BREEZE SKI MEMORABILIA COLLECTION

### “All Sorts of Stuff” ... and More

By Mike Korologos



Long-time Snowbasin ski enthusiast Nick Breeze regails visitors about his extensive collection.

OGDEN CANYON – To the awe-struck ski history enthusiasts from the Alf Engen Ski Museum board of directors who visited the venue, seeing Nick Breeze’s extensive and eclectic collection of ski memorabilia was like a dream trip to Disneyland.

And it’s no wonder. Housed from floor to the rafters – literally – in a small building adjacent to Breeze’s home in Ogden Canyon, the countless items offer a flashback or a snapshot of everything ski that you can think of – and a

lot of things you’ve never thought of or knew existed. Some items date back 100 years.

Breeze is an Ogden native and long-time skiing aficionado in Snowbasin circles so his cache has a distinctly local flavor.

He says of his private collection: “I’ve found stuff here and there over the years and I was never too good at throwing stuff away. We’re still adding to it now and then as people keep offering me skis and all sorts of items.”

“All sorts of items” is not an over-statement. The collection includes countless ski pins from all over the world, Olympic posters and racing bibs, autographed skis, old boots and bindings, ski edge sharpeners, and skis made by defunct ski companies such as Northland, Lund, Strand and Grosvald. It has lift ticket stubs from the 1940s and 1950s when a chair ride at Snowbasin was 25 cents and it has a full-sized cutout of ski movie guru Warren Miller.

Genesis of his collection can be traced to Breeze being employed by Rossignol, the ski company, which has operations at the Freeport Center in Clearfield. Working for Rossignol for 20 years, growing up at the doorstep of Snowbasin and his passion for skiing immersed him well into the ski community. Over the years he would trade equipment with his ski pals, collect gear through demos and scan the shopping website eBay for unusual items.

While Breeze obviously is proud of his extensive, “eye-popping” collection, he laments that it is not readily available to the public. “We just don’t have the facilities, the display cases, the fancy lighting, the parking – all the stuff you need to accommodate many visitors.”

But not having his items readily available to the public won’t stop Breeze from pursuing his labor of love. “We’ll keep collecting indefinitely,” he says. “I’m trying to have one of every type ski ever made.”



Nick Breeze, left, and Ron Steele, President of Rossignol Ski Co., admire life-size cutout of ski movie film guru Warren Miller.



Nick Breeze – been collecting “stuff for 50 years.”



Darm Penny enjoying Nick Breeze collection



## S. J. 'JOE' QUINNEY: A LEGACY OF VISION AND GENEROSITY

UTAH OLYMPIC PARK – Greeting thousands of visitors annually as they enter the architecturally striking winter sports center that bears his name is a bronze statue of S. Joseph “Joe” Quinney.

The Joe Quinney Winter Sports Center appropriately showcases the colorful history of skiing in the Intermountain West by way of the Alf Engen Ski Museum and the George S. and Dolores Dore’ Eccles 2002 Olympic Winter Games Museum. Together these exhibits present one of the country’s largest collections of skiing memorabilia.

The stately likeness of the bespectacled Quinney is larger than life...and rightly so. During his lifetime the man who is widely regarded as “The Father of Utah’s Skiing Industry” was big in stature, accomplishment, public service and humility. Conversely, he was not big on pomp or profile.

Born in 1892 in Logan, Utah, Quinney graduated from Utah State University and Harvard Law School. In 1917 he married Jessie Eccles and two children followed, David Quinney Sr., and Janet Q. Lawson. Later he organized one of the region’s most respected law firms in Salt Lake City, Ray, Quinney and Nebeker.

The elder Quinney became immersed in public service early in his career and was elected to the Utah House of Representatives in 1921. In the mid-1930s he served as president of the Utah Ski Association, a thriving promoter of major ski jumping events in the region. In those roles he gained insights into the potential of skiing as well as laws related to lands administered by the U.S. Forest Service.



Joe Quinney at Alta, Utah, circa 1975

In 1937 he coupled his public lands and tramway safety knowledge with his vision of skiing and his persuasive nature to solicit friends and business associates to invest funds to establish the Salt Lake Winter Sports Association for a grand total of \$10,000.

A central figure of the infant enterprise, Quinney orchestrated the transfer of ownership of some 1,800 acres of land at the one-time mining town of Alta from storied mining promoter “Mayor” George Watson

to the U.S. Forest Service. It represented Watson’s payment for delinquent taxes owed on defunct mining claims in Little Cottonwood Canyon. Coincidentally, that same mining town had been identified as a potential ski area years earlier by then-forest service consultant Alf Engen whose statue shares a platform with Quinney at the winter sports center.

In 1938 Alta became one of the first areas in the country to offer lift-served skiing to the public. Thus, Utah’s now-thriving ski and snowboard industry was born. The Salt Lake Winter Sports Association would go on to become Alta Ski Lift Company, a company which Quinney would serve as president and CEO until his death in 1983. At the helm as Alta’s founder, Quinney’s vision and philosophy was quite simply to provide “the very best, affordable skiing for the local skier”. Period.

Quinney’s legacy is omnipresent. He was installed into the National Ski Hall of Fame in 1975 and was a charter member of the Intermountain Ski Hall

of Fame established in 2002. In addition, the University of Utah J. Willard Marriott Library annually honors an individual who “made significant contributions to the sport of skiing in the Intermountain Region” by presenting its prestigious S.J. Quinney Award to that person during its annual Ski Affair fund-raising event.

Ultimately, The S.J. and Jessie E. Quinney Foundation, along with the major support of extended Quinney and Eccles family foundations and individual family members, provided the majority of funding for the stately \$10.6 million Joe Quinney Winter Sports Center, which opened to the public after serving as a media sub-center during the Olympic Winter Games of 2002.

Today the unassuming S. J. “Joe” Quinney likely would be proud to be called “The Father of Utah’s Skiing Industry” and prouder still to see his beloved Alta celebrate its 75th anniversary as it did during the 2012-2013 season. But, true to his nature, all Joe ever really wanted was to provide “the very best, affordable skiing for the local skier.” Period.



Janet, Jody and Joe Quinney in early days at Alta.

*Ski* MEISTER

A publication of the Alf Engen Ski Museum Foundation  
 Connie Nelson, Executive Director  
 connie@utaholympiclegacy.com  
 engenmuseum.org

Alf Engen Ski Museum Foundation  
 3419 Olympic Parkway  
 P.O. Box 980187, Park City, Utah 84098  
 Phone 435-658-4240 Fax 435-658-4258

Inquiries, questions, or submissions of press releases and articles of interest for the Alf Engen Ski Museum Foundation newsletter are welcome. Send correspondence and newsletter submissions to the Foundation office.

# ALF ENGEN SKI MUSEUM



## Board of Trustees

David L. Vandehei  
*Chairman/President*

Scott C. Ulbrich  
*Chairman Emeritus*

Mike Korologos  
*Vice President*

Barbara Yamada  
*Secretary*

Michael R. Maughan  
*Treasurer*

Connie Nelson  
*Executive Director*

David Davenport  
Spencer P. Eccles  
Alan K. Engen  
James Gaddis  
Donald Hague  
Tom Kelly  
Herbert C. Livsey  
Barbara McConvill  
David C. Pickett  
David Quinney  
Nathan Rafferty  
Dr. Greg C. Thompson

## Honorary Board Members

Ruth Roger Altmann  
John Bower  
Spencer F. Eccles  
Bill Lash  
Janet Q. Lawson  
(deceased)  
Lou Lorenz (deceased)  
Donn G. Mosser, M.D.  
Gray F. Reynolds



*By David L. Vandehei*

FALL 2013 – Thanks to many individuals, companies, state and local government grants, our new exhibits should be under construction or completed by the time the snow flies at the museum.

The Alf Engen Ski Museum is eleven years old and, after hosting thousands of visitors, is in need of some refreshing. Approximately 30 percent of the museum will be updated with these state-of-the-art, “must see” exhibits.

The Alf Engen Ski Museum Foundation does not take on any debt; all new exhibits and equipment are completely funded before construction is begun. Our financial management is carefully monitored by the Board of Directors and the Executive Director.

If not for the foresight and generosity of the Eccles, Engens, Quinneys, and many more, we would not have the outstanding facility to showcase winter sports in the Intermountain West.

There are several additional updates still in the planning phase awaiting grants for their completion. We look forward to seeing you at the museum this autumn.

## CHAIRMAN’S GLIMPS INTO THE PAST

**Quips by Alf Engen as told to Alan Engen and relayed to Chairman Vandehei.**

“I love the little kids. To see them jumping at Bear Hollow (Utah Olympic Park) brings back many memories from my childhood and the happiness ski jumping brought to me. It is wonderful to see what these boys and girls are doing. I think with this facility, there is no reason why Utah cannot develop a future world ski jumping champion right here with these great facilities. To me, this facility is truly a dream come true in my lifetime.” (Watch our athletes at the Sochi 2014 Games.)

“Retire...me? What would I retire to? I have the most beautiful office in the world and I plan to continue to ski as long as these old legs will allow me to stand up.”

“Medals, who needs more medals? I have a room full of them. But to give a good ski lesson, that is what is important to me.”

*(Alf Engen 1909 – 1997)*



Alf Engen with some of his favorites, young skiers. Photo circa late 1980s



## DIRECTOR'S LETTER

By Connie Nelson

**Hold onto your goggles,** our new exhibits are scheduled to be installed and operational by October 2013. The interactive quad chairlift ride will be a trend setter for museums around the world. The first experience is a high-definition speed flying video by Marshall Miller taken off Mount Superior in Little Cottonwood Canyon, Utah.

It's exciting and exhilarating to think that over one-third of our museum will be redesigned and operational in the next month. These incredible new exhibits are due to the generous seed funding from the Adobe Foundation along with Summit County's RAP tax grant, Summit County 1% Restaurant tax grant, University of Utah, Park City Rotary Grant, Utah Division of Arts & Museums, Park City Mountain Resort Legacy Fund and our ever-faithful donors.

Some of our highlights over the past six months include:

- Attendance – We entertained and educated approximately 750-1,000 people per day over the summer months, bringing our yearly visitor total to over 275,000.
- Exhibits – Four mobile exhibits in the foyer now feature the Women's Ski Jumping team artifacts and story; the new interactive ski experience exhibit will be installed by October; existing exhibits have been integrated into the new museum design; an upgraded ski jump exhibit features the former University of Utah Cauldron Park video; and a new exhibit featuring Ted Ligety will soon be placed in the exit of our museum.
- Education – We have educated and enlightened over 2,215 students from 25 schools throughout Utah in the 2012-2013 school year. This program would not be possible without the continued support from Summit County Recreation, Arts and Parks (RAP) Tax Grant, Marriner S. Eccles Foundation, Park City Sunrise Rotary Club and Wells Fargo Bank.

We are looking forward to hosting the Skiing History Week (International Ski History Association in conjunction with the U.S. Ski and Snowboard Hall of Fame) here in Park City, Utah from March 31 through April 6, 2014. Look for details on our new website [engenmuseum.org](http://engenmuseum.org).



## THE MUSEUM COULDN'T OPERATE WITHOUT OUR DOCENTS



Marilyn at the London Bridge.

Marilyn Jameson started as a docent with the museum last year. She is a retired nurse from Maryland. Marilyn volunteered at the 2002 Olympic Winter Games at the Nordic Ski Jump venue. She and her husband, Jim, fell in love with Park City and moved shortly after the Games. Jim and Marilyn have been

married 47 years, are both active in the Newcomers Club and have four grandchildren. Welcome Marilyn!

A big thank you to all our docents who work tirelessly with very little recognition. They are the heart of the museum.



Docent "Thank You" party at Connie's house in July.



## INTERMOUNTAIN SKI HALL OF FAME INDUCTION CEREMONY

**Thursday, September 26, 2013**  
**Honoring four new members**

The Intermountain Ski Hall of Fame induction will be held at the Alf Engen Ski Museum in Park City, Utah. For information contact Connie Nelson at [connie@utaholympiclegacy.com](mailto:connie@utaholympiclegacy.com) or call 435-658-4240.

**Dean Perkins** won numerous downhill and giant slalom titles in U.S. national competitions from 1950 to 1955. He was a member of the U.S. FIS World Cup team in 1950-1951 and won the inaugural Roche Cup on Aspen Mountain that season. He later ran a popular ski shop in Ogden, Utah for 20 years.

Between 1974 and 1976, **Alan Schoenberger** had 16 first- and second-place international finishes in ski ballet, including the 1976 World Championships. He and his father later developed the ski carpet used at indoor training sites and in his famous ski-entertainment shows.

The late **Dr. Robert Smith** was an orthodontist who made his first ski goggles by hand in the mid-1950s using dental tools, foam and glue. He later formed Smith Goggles, which in the 1970s became the leading ski goggle in the United States.

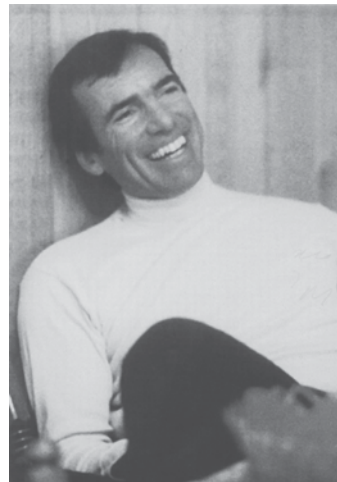
**LeRoy Shultz** is a mechanical engineer and national expert on designing, building and inspecting safer ski lifts, trams and gondolas. A native of Ogden, Utah and a graduate of the University of Utah, Schultz constructed more than 40 chairlifts in North America and was regional tramway engineer for the U.S. Forest Service in Idaho and Montana.



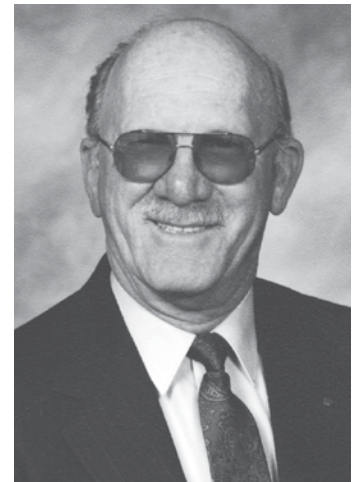
Dean Perkins



Alan Schoenberger



Dr. Robert Smith



LeRoy Shultz



## IN MEMORIAM

### Intermountain Ski Hall of Fame loses one of its members

**PATRICK MILLER** died June 22, 2013. He was the Director of Skiing at the University of Utah from 1976 to 2000. Pat led the University of Utah Ski Team to nine NCAA Skiing Championships. Pat was inducted into the Utah Sports Hall of Fame, the Intermountain Ski Hall of Fame (2008), the Fort Lewis College Athletic Hall of Fame (2001) and the Maine Ski Hall of Fame. Pat was an Advisory Board Member of the U of U Ski Archives for over 20+ years and was presented with the Sue Raemer Memorial Volunteer Award in 2006. He was the Exhibit Chair, setting up displays at various venues prior to, during and following the 2002 Olympic Winter Games. Pat will be sorely missed in the world of ski history.





# CLASSIC GELANDE TOURNAMENT GOES THE DISTANCE

## Utah Olympic Park hosts 2012-13 Alpine Ski Jumping Association Tournament

On March 16, 2013, Utah Olympic Park, with support offered by the Alf Engen Ski Museum Foundation, hosted the 2012-13 Alpine Ski Jumping Association (ASJA) year-end jumping spectacular named the Alta Cup. Alta, Utah was the first, on record, to hold a formal gelande jumping tournament event in April 1963. It was subsequently held at Alta each spring until the mid-1970s when it was discontinued. The event was moved to other locations throughout the country including Snowbird, Utah; Jackson Hole, Wyoming; Snowbowl, Montana; and Steamboat Springs, Colorado.

Gelände jumping differs from Nordic ski jumping in that the jumps are executed with regular alpine equipment, including skis with fixed bindings, boots and poles. Nordic ski

jumpers, on the other hand, use extra long wide skis with free heels to assist in making exceptionally long flights.

This season's Alta Cup was held on the 90 meter Olympic jumping hill and was won by Rolf Wilson, age 34, from Bozeman, Montana. Overall season series winner went to Tim Magil, who at age 54, came out on top with a combined score totaling 375 points.

Alan Engen, who won the first gelände tournament at Alta in 1963, was on hand to give out the awards to the winners near the entrance to the Joe Quinney Winter Sports Center/Alf Engen Ski Museum.

According to Paul Lodi, representing the professional gelände jumpers, the event

was deemed so successful that preliminary discussion is underway to hold next year's Alta Cup tournament at Utah Olympic Park, as well. It will be celebrated as the 50th anniversary year of the prestigious tournament and will coincide with Park City Ski Area's 50th anniversary and the 2014 U.S. Ski and Snowboard Hall of Fame induction ceremonies.

The Alf Engen Ski Museum Foundation offers congratulations to all the athletes who competed at this year's Alta Cup gelände event and wishes them well when they begin, on artificial turf, the next ASJA Pro Tour season at Steamboat Springs, Colorado in July 2013.



Alan Engen (center) congratulates winners of the 2013 ASJA gelände tournament, left to right, Tim Magill (Steamboat Springs, CO); Pat Amone (Steamboat Springs, CO); and Marsh Gooding (Burlington, VT).



Alpine gelände ski jumpers gather at the foot of the 90 meter Utah Olympic Park jumping hill. Competitors included Utah jumpers Chris Raemer and Josh Hansen.

# ENGENMUSEUM.ORG TO LAUNCH NEW WEB SITE

## Coming this fall, be sure and check it out!

An exciting new look is coming to the Alf Engen Ski Museum Foundation's website, [www.engenmuseum.org](http://www.engenmuseum.org). Scheduled to go "live" this fall, this state-of-the-art site will make it easier for online visitors to navigate the museum's website and get information about the Engen Museum, the Eccles 2002 Olympic Winter Games Museum, and the museum's two halls of fame. A mobile version will give smartphone and tablet users this same ease of navigation and accessibility. Selected displays inside the Engen Museum will allow the on-site visitor to get more in-depth information via attached QR codes. Check out the museum's new site and let us know what you think. We'll be looking forward to hearing from you!



# DONOR WALL OF FAME

*The Alf Engen Ski Museum Foundation is able to perpetuate a showplace for Intermountain winter sports history through your contributions.*

## BENEFACTORS \$1,000,000+

George S. & Dolores Doré Eccles Foundation  
Emma Eccles Jones Foundation  
Lawson, Janet Q.  
S. J. & Jessie E. Quinney Foundation

GET YOUR 2013-14  
SKI SEASON OFF TO A  
SOARING START WITH A  
VISIT TO THE ALF ENGEN  
SKI MUSEUM.

## GOLD MEDAL DONORS \$100,000 - \$999,000

Dr. Ezekial & Edna Wattis Dumke Foundation  
Katherine W. & Ezekiel R. Dumke Jr. Foundation  
Marriner S. Eccles Foundation  
Engen, Evelyn  
Lawson, Frederick Q.  
Quinney, David & Shari  
Swartz Foundation (Jim & Susan)

## SILVER MEDAL DONORS \$5,000 - \$99,999

Adobe Foundation	Engen, Scott	Richard E. & Nancy P. Marriott Foundation	Reister-Robb Interactive	UT Office of Museum Svcs.
Alta Ski Lifts Company	Engen, Todd & Michelle	Miller Ski Company	Sackler, Dr. & Mrs. Richard	Wallace, M. Walker
Anderson, Barbara Stewart	Fidelity Foundation	Mosser, Dr. Donn G. & Dr. Janet	Saunders, Hy & Debra	Webber, Dick
Cumming Foundation	Gilbert, G. S. Beckwith	Penske, Roger S. & Kathy	Shrontz, Jody	Williams, Larry
Cumming, John & Kristi	Hyland, Libby	Prothro, Mark & Diane	Simon, Barbara Alley	Witter, Dean (Morgan Stanley)
Dreyfous, James & GERALYN	Knowles, Lawrence & Marilyn	Pickett, David & Nancie	Summit County	Wells Fargo Bank
Duncan, Paul & Marilyn	Korologos, Tom C.	Prince, JaLynn & Greg	Sweet, Jared	
Eccles, Spencer P. & Kristine	Janet Q. Lawson Foundaton	Ray Quinney Nebeker	Ulbrich, Scott & Susanne	
Engen, Alan & Barbara	Lawson, Peter Q.		U.S. Forest Service	

## BRONZE MEDAL DONORS \$1,000 - \$4,999

Academy Studios	Deer Valley Resort	Keller, Susan Ann	Newman, Frank	Sundance Resort
Altmann, Ruth Rogers	Douglas, Ronald & Nylene	Kessler, Alfred E.	Park City Chamber/Bureau	Sweeney, Ed
Alyeska Resort	Duncan, David R. L., M.D. & Irma	Kogstad, Rolf	Park City Mountain Resort	Taylor, Larry
Amidon, David	Durham, John & Shirley	Krug Family	Legacy Fund	Thomas, Richard S. & Susan G.
Bamberger Foundation	Durham, Wilby & Betty	Kunau, Lex & Celia	Pineridge Winery	Thompson,
Richard D. Bass Foundation	Fletcher, Mel & Peggy	Lange, Keith & Alice	Professional Ski Instructors of America	Dr. Gregory C. & Karen S.
Beekley, W. Mason	Fox, Leo W.	Langford, Kirk	Prosek, Tom	Underdog Foundation
Bounous, Junior & Maxine	Fuegi, Hans & Sally	Senator Grant & Maralyn Larson Fund	Prothro, J. Patrick	Utah Humanities Council
Bower, John & Elizabeth	Gaddis, Jim & Barbara	Lawrence Goodman Fund	Roberts, Linda	Vandehei, David & Susan
Briggs, William M.	Goldminer's Daughter	Livsey, Herbert & Wilma	Rowan, Chuck & Suzanne	Weisel, Thomas
Burt, Chad	Goodman, Irvin & Dorothy	McMullen Family Foundation	Royal Street Corporation	Wild Old Bunch
Byrne Family, The	IBM Corporation	Meldrum, Daniel & Patricia	Rytting, Bill & Suzy	Willard L. Eccles Foundation
George Cartwright Family	Imboden, Adolph	Merriman, III, Charles H.	Shaffer, Richard & Kay (Nagel)	Wythe, Henry & Susan
Canyons Resort	International Skiing History Association	Michaels, H.C. & B. A.	Shane, Elfreide	Yamada, Barbara
Cocoran, John M.	Johnson, Ted & Shirley	Miller, Earl A.	Snyder, Daniel & Debra	Yerman, Bob
Cluff, Whitney & Frances	Keller Family Foundation	Nebeker, Dick & Ann	Spedden, Rush & Betty	Zions Bank
		Nelsen, Dan & Heidi	The Summit Institute	



# ALF ENGEN SKI MUSEUM MEMBERS

NOVEMBER 2012 – AUGUST 2013

## CORPORATE MEMBERS

\$5,000+

Quinney, David & Shari

## SUSTAINING MEMBERS

\$1,000 - \$4,999

Canyons Resort  
Cumming, John & Kristi  
Deer Valley Resort  
Durham, John & Shirley  
Eccles, Spencer P. & Kristine  
Engen\*, Alan & Barbara  
Gaddis, Jim & Barbara  
Johnson, Ted & Shirley  
Nelsen\*, Dan & Heidi  
Vandehei\*, David & Susan

## ENRICHING MEMBERS

\$500 - \$999

Fuegi\*, Hans & Sally  
Irwin, Marsha  
Korologos, Tom C. & Ann  
Mosser, Donn G. & Janet  
Parkinson, Clark & Ann  
Salt Lake Convention &  
Visitors Bureau  
Shane, Elfriede

## SUPPORTING MEMBERS

\$250 - \$499

Anderson, Woody & Sandy  
Bower\*, John & Bonnie  
Cook, Lauren Scholnick & Steve  
DesLauriers, Kit & Rob  
Dreyfous, Jim & Geralyn  
Fryer, L. Holley  
Gaddis, Jim & Barbara  
*In Memory of Jon Engen*  
Goar, Mike  
Krug, Scott  
Prothro, Mark & Dianne  
Rafferty, Nathan & Karen  
Spencer, Bill & Judy  
Steele\*, Ron & Julie  
*In Memory of Pat Miller*  
Thornton Family  
Ulbrich, Scott & Sue

## CONTRIBUTING MEMBERS

\$100 - \$249

Arner, Dick & Diane  
Biersbach, Tom  
Brennwald, Heidi Voelker & Tim  
Brett, Walt & Candy  
Brunvand, Jan & Judith  
Budge, Doris  
Burton, Norman & Joanne  
Chesley, Jim and Jane

Cobabe, Aleta  
Danforth III, Judith & Murray  
DesBarres, Linda  
Devaney, Bob & Betsey  
Doyle, Zane & Debbie  
Duncan, John & Anita  
Duncan, Paul & Marilyn  
Eaton, Gordon & Karen  
Eccles, Katie  
Engen, Alan & Barbara

*In Memory of Jon Engen*  
Ferries, Chuck & Nancy  
Grass, Ray & Carol  
Hall, Donald & Adele  
Hoagland, John & Vicki  
Holli, David & Pat  
Hoshaw, Robert & Ursula  
Hoyt, Steve & Raigon  
Kelly, Tom & Carol  
Korologos, Mike  
Kraus, Kevin  
Lash, Bill  
Learned, Leland & Laura

*In Memory of Jon S. Engen*  
Lee, Craig  
Levitt\*, Mimi  
Lorenz, Betty & Edith  
Loughlin\*, Bill & Julia  
Lupus\*, Stormy & Carol  
Marsh, Barbara  
McCauley\*, Debra  
McDonald, Margo  
McIntosh, Janet Grant & Steve  
Meldrum, Daniel & Patricia  
Melville, Marvin A. & Renee B.

*In Memory of Alton C. Melville*  
Mickelson, Brett & Lori  
Miller, Pat  
National Ski Areas Association  
Nelson\*, Connie  
Niederhauser & Davis  
Pickett-Bean\*, Nancy  
Pobrislo, Allison  
Reed, Sydney  
Rosetta, Dick & Susan  
Shields, Gary & Lynda  
Simon, Barbara Alley  
Ski Utah  
Smith, Brad  
Smith, Terrell W.  
Spedden, H. Rush & Betty

*In Memory of Arthur Graves Wilder*  
Stone, Barry & Carol  
Taylor, Dick & Marilyn  
Thomas, Charles  
Thomas, Gregory  
Thomas, Richard & Susan  
Thompson\*, Dr. Greg & Karen  
Thurgood, David G.  
Wardell, Sayre Beekley & Dan  
Weatherbee, Nona  
Weichsel, Bernie  
Wells, Bob & Patti

## FAMILY MEMBERS

\$50 - \$99

Bench, Dick & Elrae  
Bounous, Junior & Maxine  
Bradshaw, Howard C.  
Cook, Bill & Lucy  
Dean, Peggy  
Deegan, Lambert & Judith  
Dennis, Leland & Thayre  
DeRose, Michael Elvidge & Jennifer  
Dunlea, Barbara  
Emerson, Bruce & Kathy  
Engen, Alan & Barbara  
*In Memory of Pat Miller*  
Fey, Tom & Carolyn  
*The Thomas H. & Carolyn L. Fey  
Family Foundation, Inc.*

Gee, John  
Grunland\*, Paul & Mary  
Gurr, John and Ilauna  
Hague, Donald & Lorna  
Hedderly-Smith, Dave & Carolyn  
Jamieson, M Richard & Constance  
Jenson, Sidney & Velma  
Kipp, Carolyn  
Korfanta, Karen A.  
Larson, Russ & Janifer  
Libecchi, Greg and Mindy  
Ligety, Bill & Cyndi Sharp  
Marsh, Fionna  
McConkey, Jim  
McConvill, Barbara & Michael  
Miller, Alan & Ann  
Miller, Jim

*In Memory of Pat Miller*  
Miller\*, Ken & Ann  
Nelson\*, Dr. Gerald  
Nielsen, Jeff & Karen  
Raum, Gustav & Christian  
Raizin, M.D., Leonard & Carol  
*In Honor of Alan Schoenburer*  
Ramp Sports LLC  
Schlag, Tomoko  
Scott, Jo & Jim  
Sorensen, Col. Neal G. & Carol  
Steffen\*, Daniel & Connie  
Tackman, Gary & Theresa  
Thoreson, Jerry & Nancy  
Vandehei, David & Susan  
*In Memory of Jon S. Engen*  
West, Tom  
Woll, Pam

## INDIVIDUAL MEMBERS

\$25 - \$49

Actor, David & Lisa  
Blazewich, Pat  
Cotter, Mona  
DeLafosse, Peter H.  
Daniloff, Debbie  
Demkowicz, Mary  
Dorworth, Dick  
Dunn, William A. & Charlene

DuPont, Peter & Eugenia  
Elliott, Charles & Sally  
Gillmor, Siv  
Green, Jon  
Grosword, Gerald  
Grosword, Thor B. & Twyla  
Guin, Baird & Elaine  
Hill, Duane C.  
Holland, R.J.  
Jedenoff, George A.  
Jensen, Howard S.  
Katzenberger, Ruth & Chris

*In Memory of Walter Katzenberger*  
Koenig, Helen J.  
Korologos, Gregoria  
Korologos, Sam & Tia  
*In Memory of Jon Engen*  
Lindon, Matt & Tracey  
Luers, Mike  
McClenahan, Debby  
Michaels, HC & BA  
Miller, Dale E. & Beth  
Movitz, Eileen  
Nelson, David & Shirley  
Nieminski, Andrezej & Eva  
Price, Jay  
Price, Lisa  
Ream, David J.  
Reichert, M.D.,  
Deborah Goldfarb, M.D. & Walter  
Scott, Darrell  
Scott, Eldon  
van Hartesvelt, Janet  
Walton, Mike & Terese  
Whitney, Jim & Robin Palazzo  
Yamada, Barbara

## MUSEUM FRIENDS

\$10 - \$24

Aten, Elissa  
Dutcher, John & Mel  
Hampsten, Heather  
Haslock, Chris  
Nelson, Mary Lu  
Rogers, Edward B.  
Stiegler, Pepi  
Wright, Katherine

## Thank you for your support!

### Membership Pledge Envelope Enclosed

Your tax-deductible donation of \$25 a year entitles you to receive a complimentary copy of the museum newsletter. Additional benefits are added to each donor level.

\*Donated more than once during this time period.  
ISHF-Intermountain Ski Hall of Fame





Alf Engen Ski Museum Foundation  
 www.engenmuseum.org  
 3419 Olympic Parkway  
 P.O. Box 980187  
 Park City, Utah 84098

Presorted Standard  
 U. S. Postage  
**PAID**  
 Salt Lake City, UT  
 Permit No. 4910

UTAH  
 OLYMPIC  
 PARK

**RIDE**  
 OF A LIFETIME

**FLY WITH US**

PARK OPEN DAILY | 10 AM TO 6 PM

When you play at Utah Olympic Park, your contributions directly support youth winter sports and recreational programs. From winter development training to summer multi-sport camps, the positive impact your visit makes is unmatched. Come explore all that Utah Olympic Park has to offer this winter and play with us!

**RESERVE A  
 COMET BOBSLED  
 RIDE ONLINE**

**ZIP, SLIDE, & PLAY**

WEEKENDS ONLY  
 SEPTEMBER 7 - OCTOBER 27, 2013

UTAHOLYMPICLEGACY.COM  
 435.658.4200